

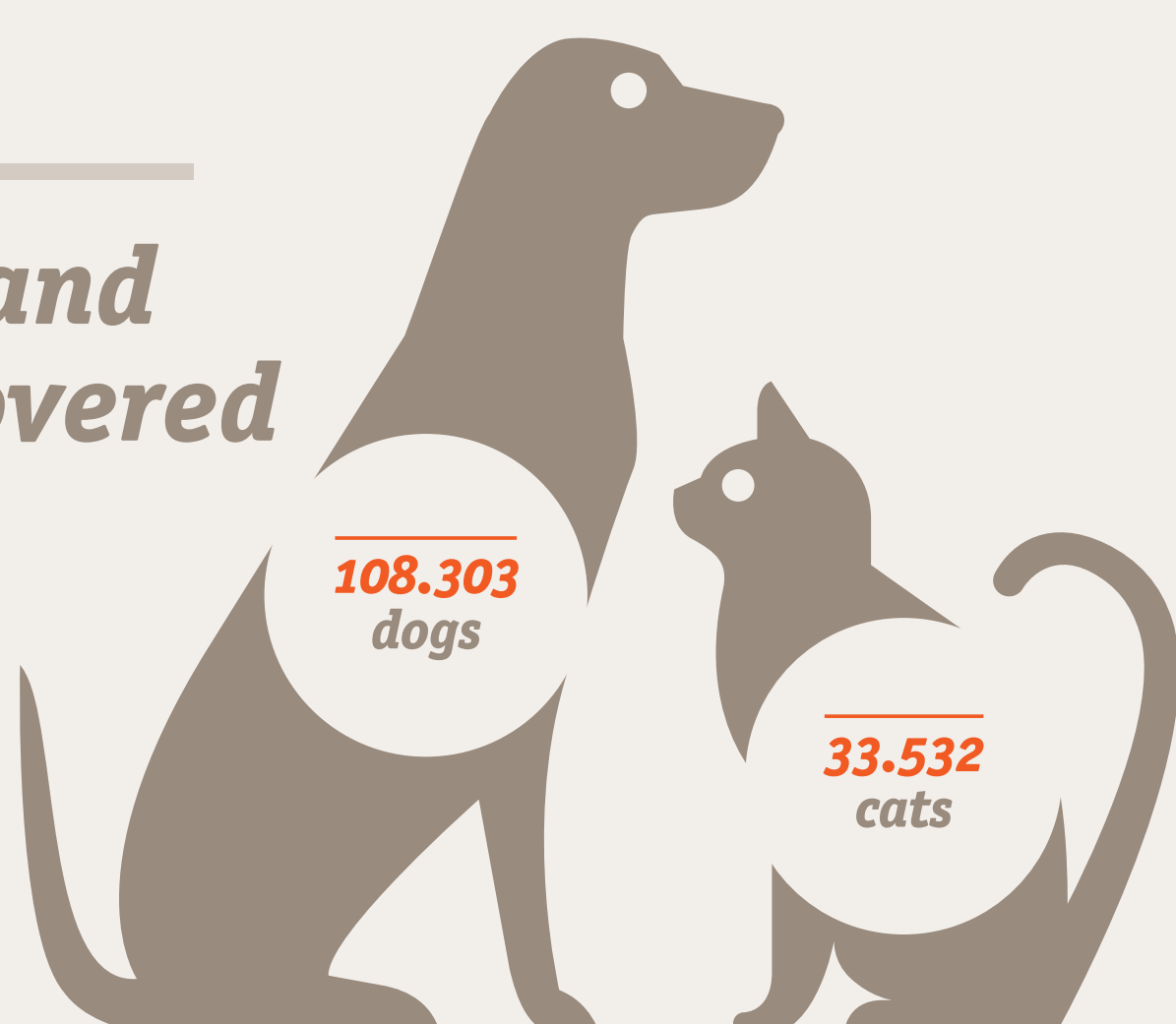


FOUNDATION
— 1987 —

STUDY OF ABANDONMENT & ADOPTION

141,000 dogs and cats were recovered in 2013.

Thousands of animals are received by shelters every year. This figure has not fallen in recent years.



Why did they abandon them?

The main reasons for abandonment are:



15%
Financial factors



14%
Unwanted litters



11%
End of hunting season



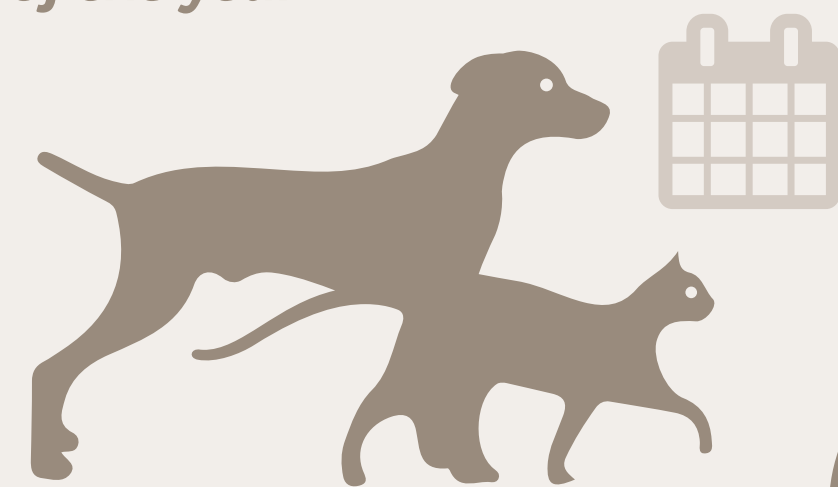
9%
Loss of interest in the animal



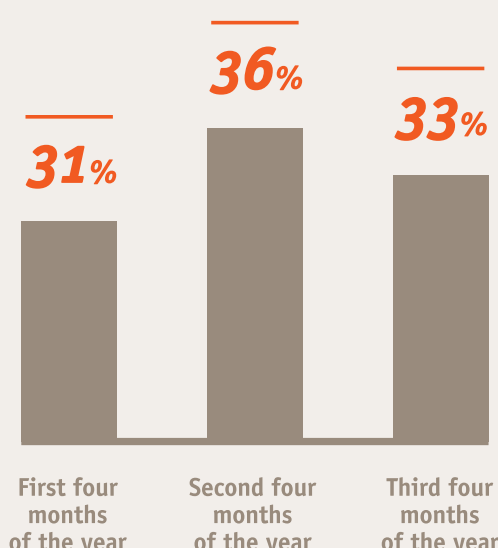
9%
Animal behaviour

When do shelters receive them?

Pets are abandoned at all times of the year



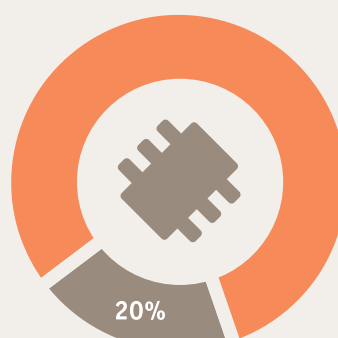
Dogs and cats recovered by four-month period



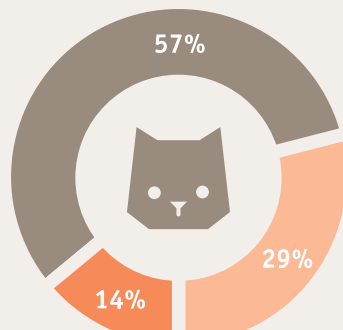
What are they like?

Features of the animals

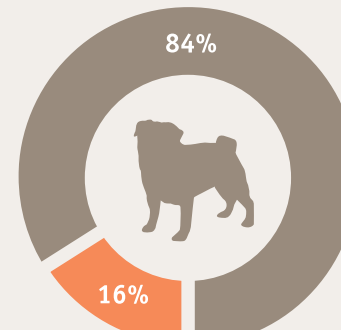
Microchip



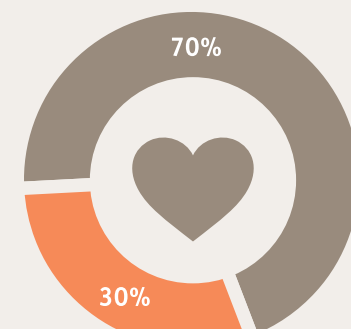
Age



Breed

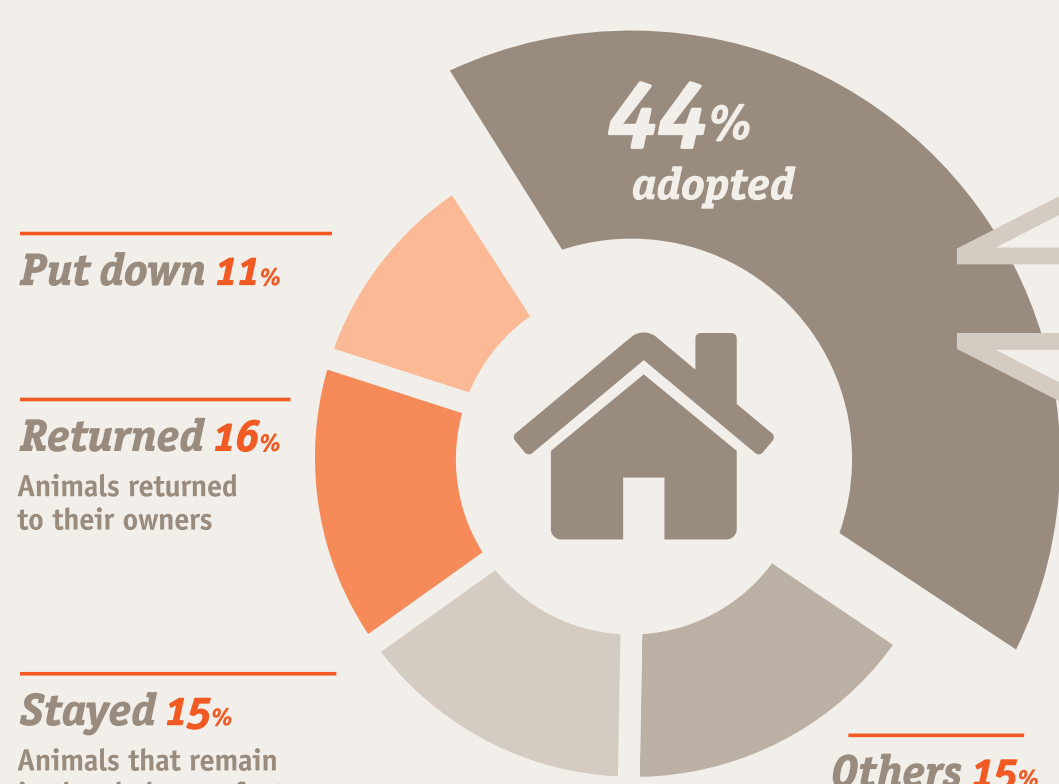


Health

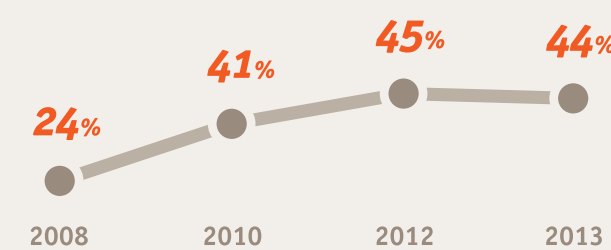


Where do they go?

Once recovered, they are:



Progression % adopted

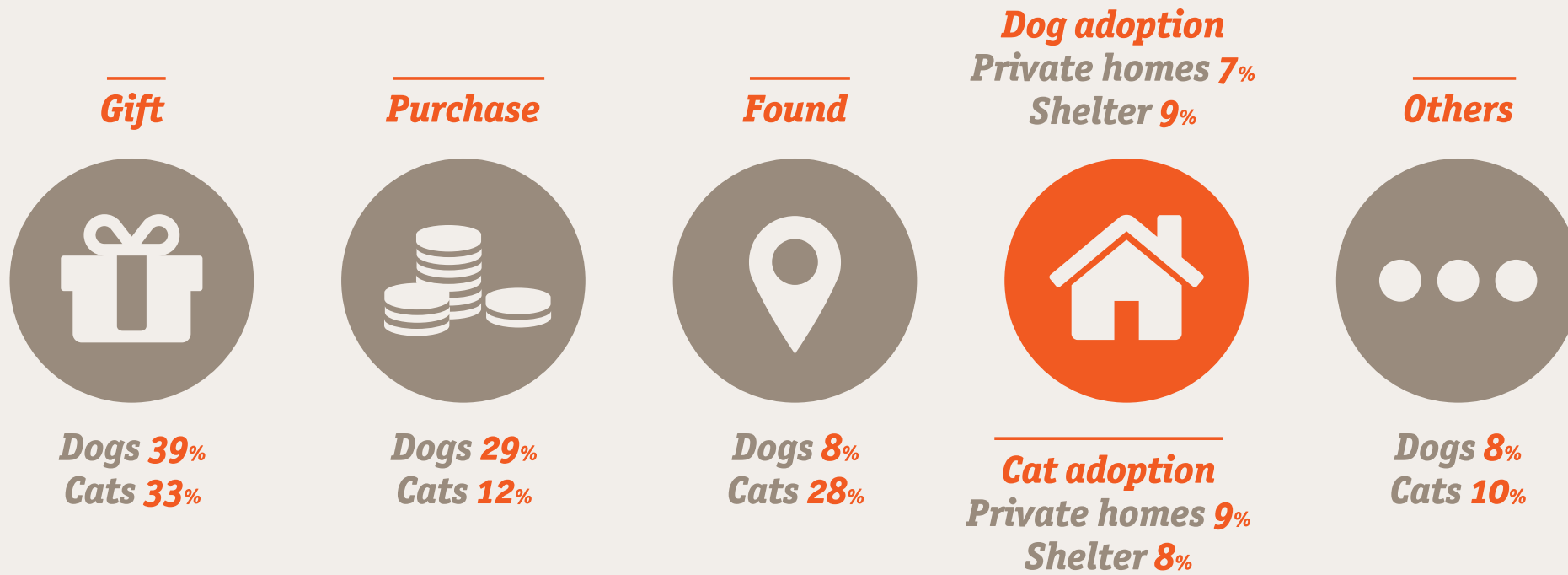


Reasons for adopting

Aware of the problem 37%
Cooperating with the shelter 25%
Recommendations 14%

Where do our dogs and cats come from?

The animals' origin:



What can you do?

- Adopt an animal
- Sterilise your dog or cat
- Identify (microchipping and registering) your animal
- Become a member or volunteer of an animal shelter



Data taken from the Affinity Foundation Study on Abandonment and Adoption 2013.
www.fundacion-affinity.org/en