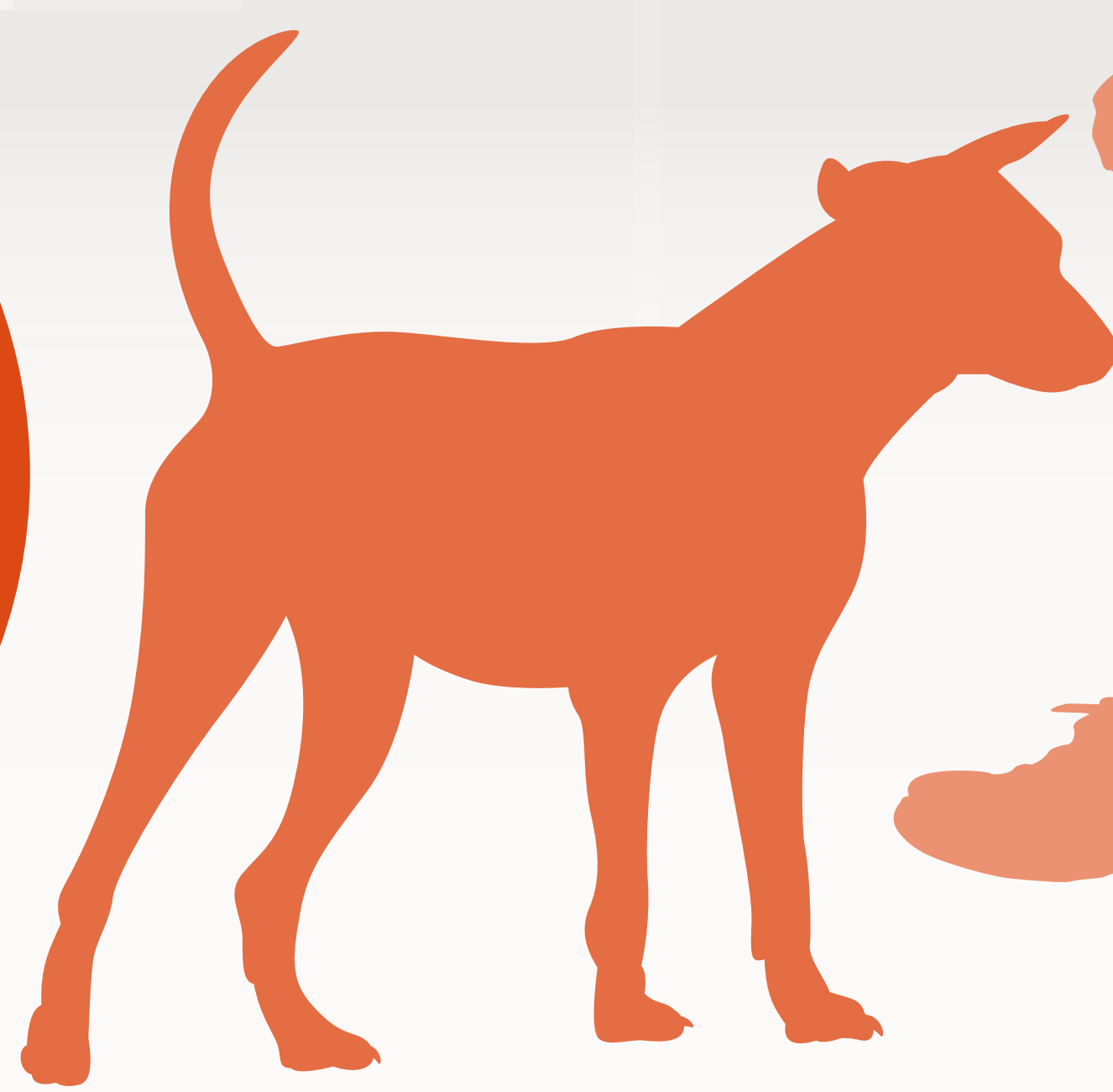
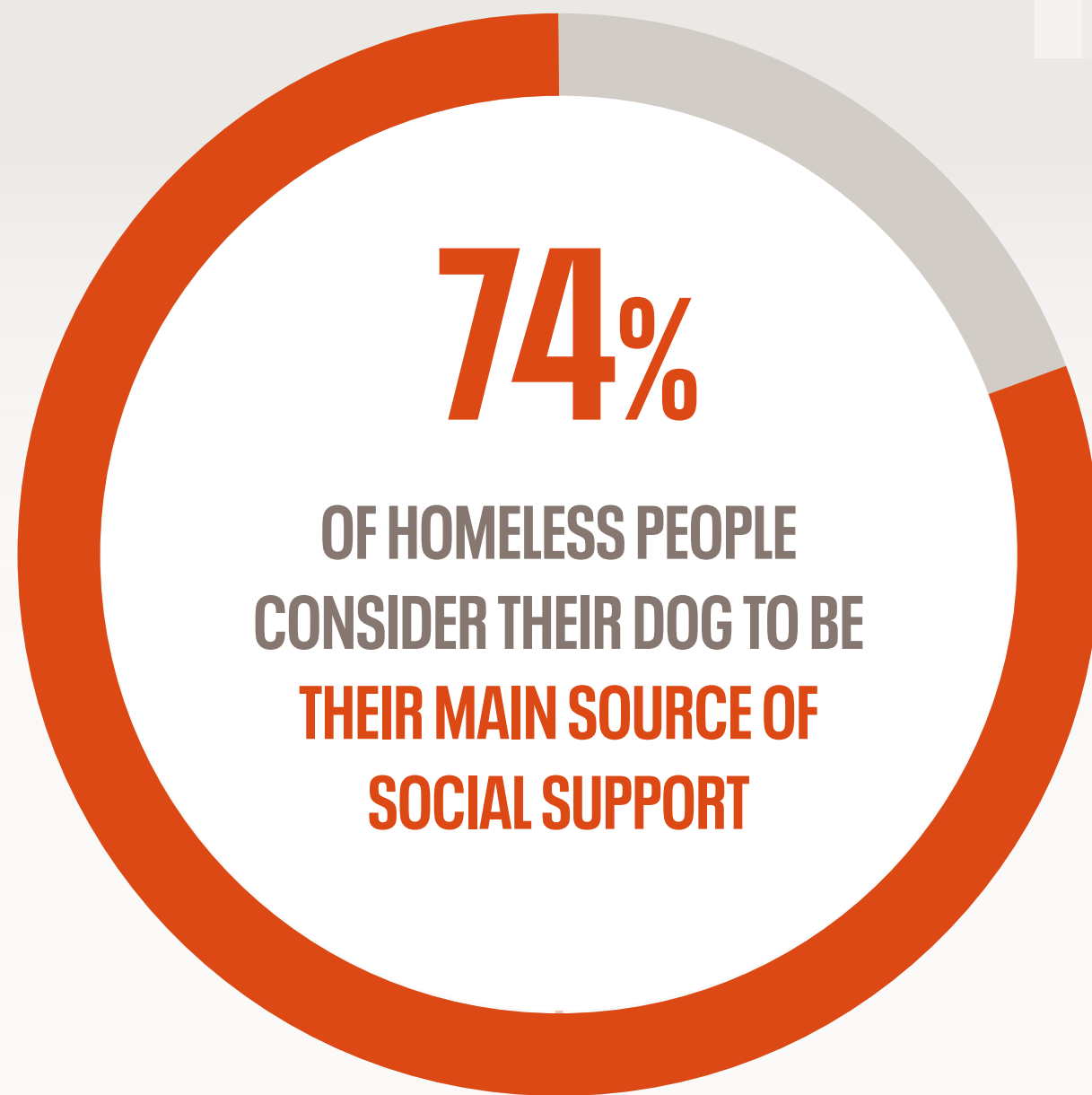


SURVEY ON

THE SOCIAL SUPPORT OF PETS FOR HOMELESS PEOPLE



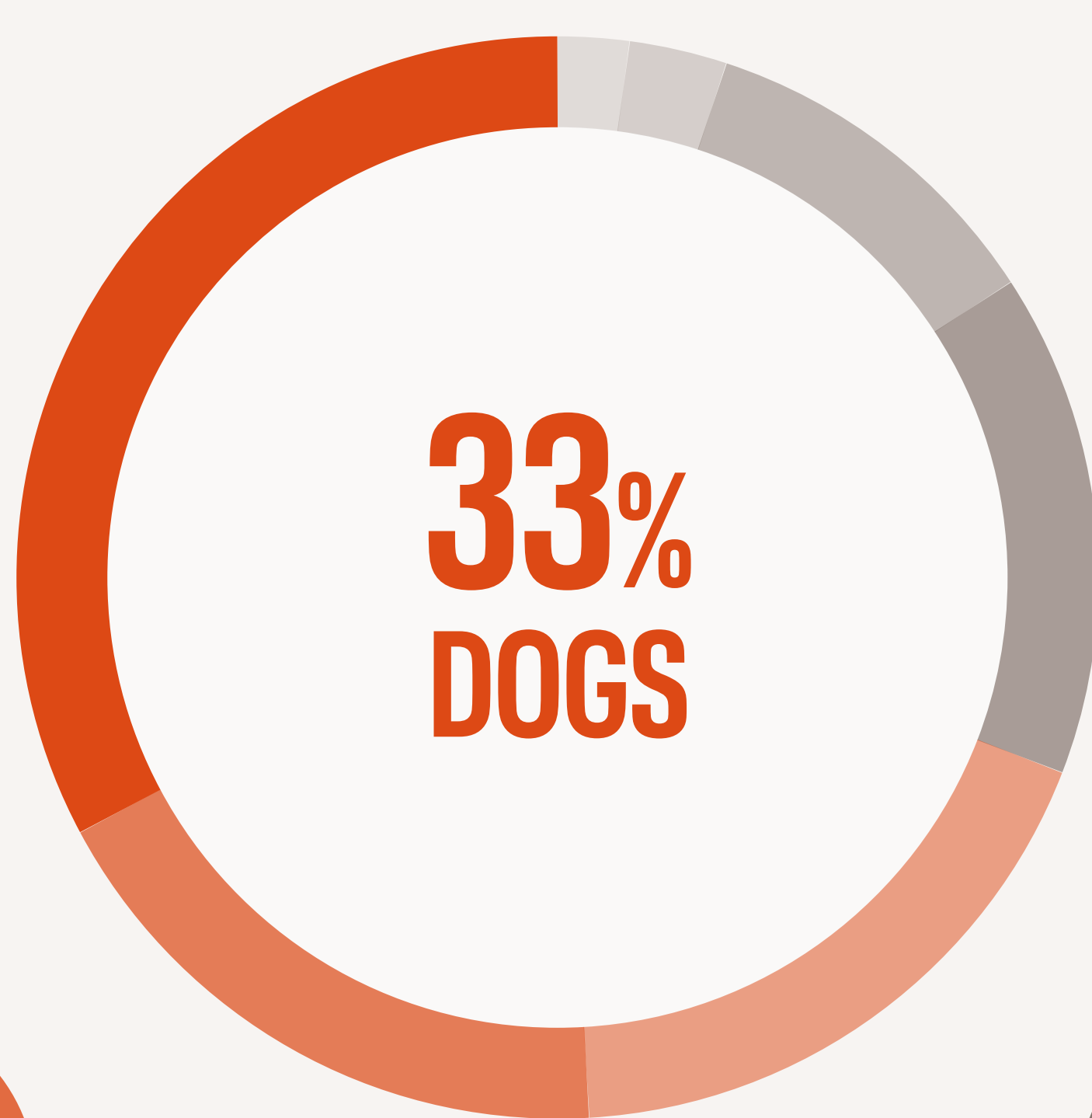
FOUNDATION
— 1987 —



Of people surveyed, 74% say their dog to be their main source of support, confirming the key role of dogs in the emotional and social well-being of homeless people

SOCIAL SUPPORT NETWORK FOR HOMELESS PEOPLE

The social support network for homeless people is made up of several actors



2% GOD



3% RESIDENTS



11% PARTNER



18% PROFESSIONALS



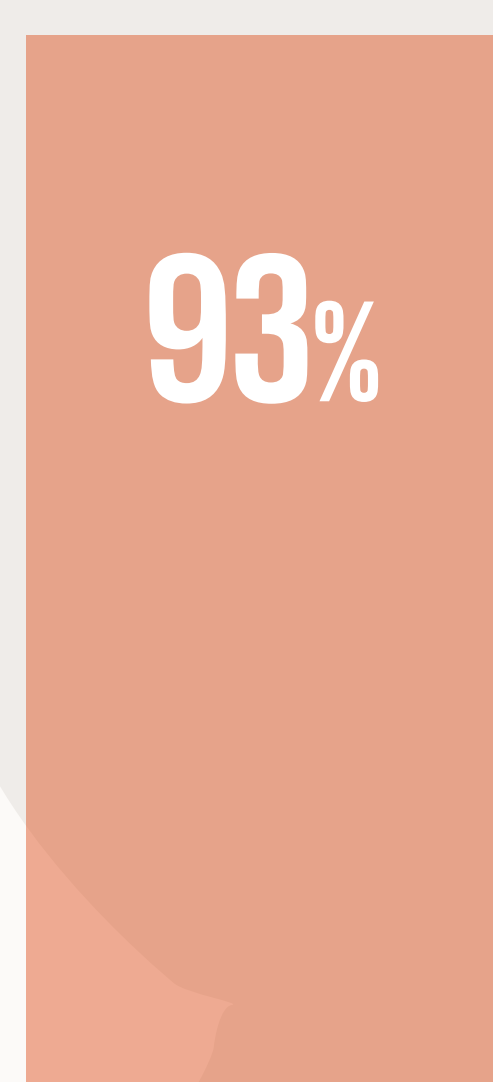
18% FRIENDS



15% RELATIVES

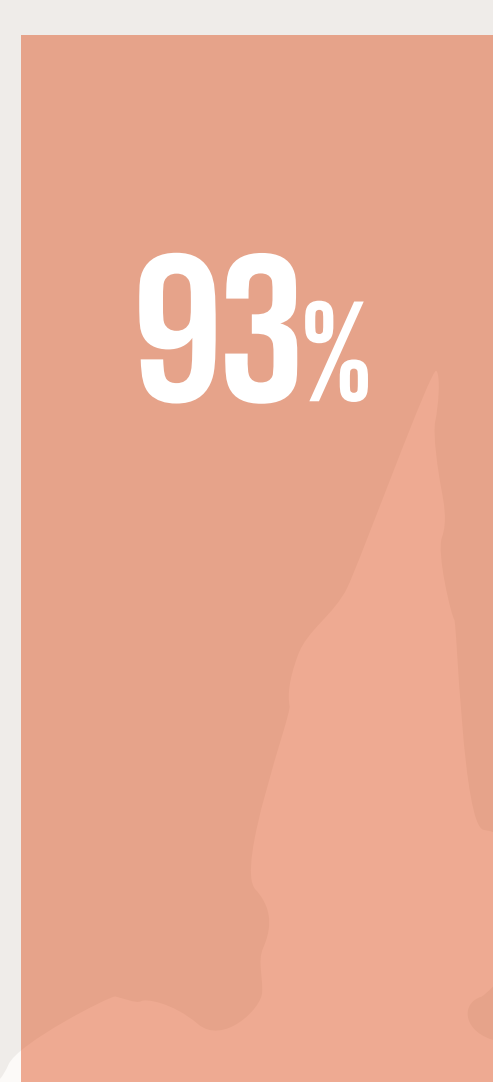
However, the dog is considered to be the main source of support for homeless people.

PERCEPTION OF THE BOND BETWEEN HOMELESS PEOPLE AND THEIR ANIMALS

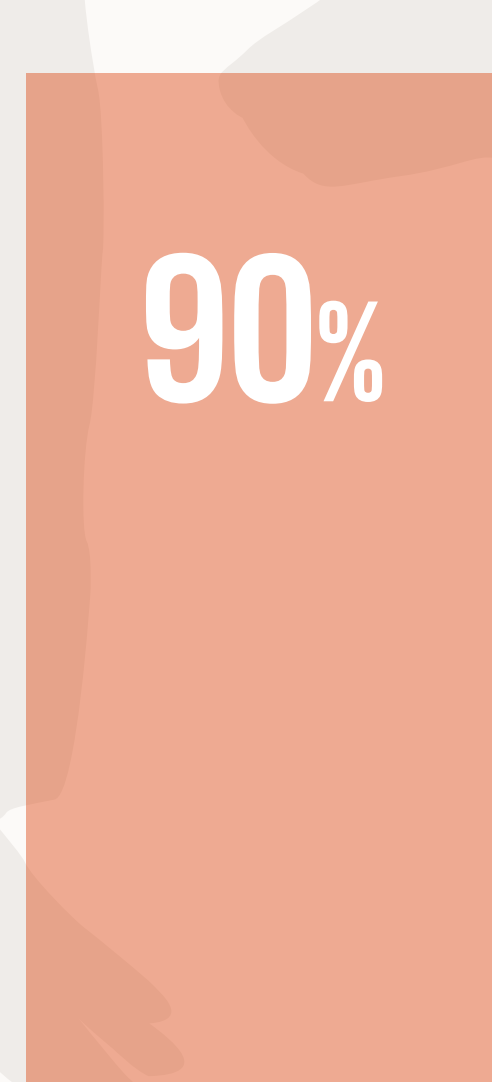


"HE WOULD NEVER LEAVE ME"

* 93% mention their dog in the first place



"WITH MY DOG I SHARE MORE HAPPY AND ENJOYABLE MOMENTS"



"MY DOG IS THE COMPANION WITH WHOM I SHOW MOST AFFECTION"

REASONS WHY THE DOG IS CONSIDERED A SOURCE OF SUPPORT

1

The possibility of sharing their time and **doing things together**

2

The constant presence of the dog, which helps to combat feelings of loneliness

3

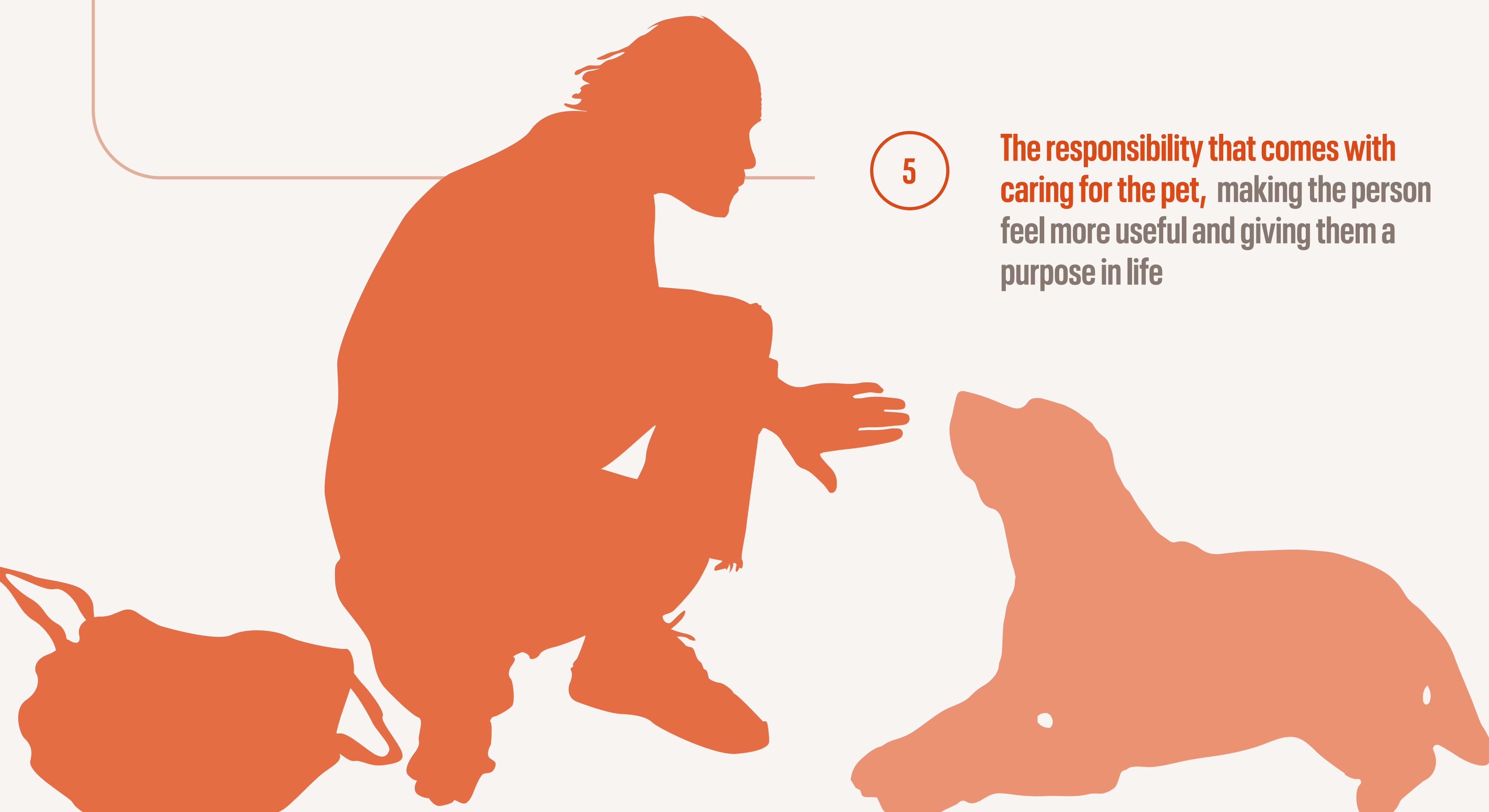
Its ability to become a confidant, establishing a relationship of trust and affection

4

The possibility of maintaining physical contact with the dog, through stroking and displays of affection

5

The responsibility that comes with caring for the pet, making the person feel more useful and giving them a purpose in life



Chair
Affinity Foundation
Animals & Health

FADA

Survey on people in vulnerable situations and pets conducted by the Affinity Foundation Chair in Animals and Health at the Autonomous University of Barcelona (UAB), the Affinity Foundation and the Foundation for Advice and Action in Defence of Animals (FAADA)